

CLDF

Chronic Liver Disease Foundation

2025

YEAR IN REVIEW

Table of Contents

3 Board of Trustees

4 Embassy of Education

5 CLDF Committees

7 2025 Educational Initiatives

- ❖ Expert Perspectives PBC
- ❖ Expert Perspectives Wilson Disease
- ❖ Bridging the Gap
- ❖ MASH APP Preceptorship Series
- ❖ Expert Perspectives On Chronic Liver Disease From ACG & AASLD
- ❖ Liver Connect
- ❖ MASH Liver Connect Series
- ❖ Clinical Exchange Reception
- ❖ CLDF Annual Abstract Review

22 Publications

- ❖ Interactive Expert perspectives from CLDF on the AASLD Guidelines, HRS
- ❖ Screening and Management of Portal Hypertension and Varices in Cirrhosis
- ❖ Clinicians and Patients Confront Practical Issues in Wilson Disease

26 CLDF Education Portal

27 Social Media

28 CLDF Conference Endorsements

29 Sponsors

30 Grant Supporters

Board of Trustees



President

Zobair M. Younossi, MD, MPH, FACP, AGAF, FAASLD
Professor and Chairman, the Global NASH/MASH Council
Center for Outcomes Research in Liver Disease
Washington, DC



Aijaz Ahmed, MD

Professor of Medicine
Medical Director Liver Transplantation
Division of Gastroenterology and Hepatology
Stanford University School of Medicine
Stanford, California



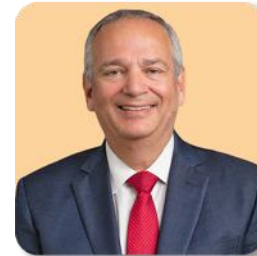
Secretary & VP, Education

Kimberly A. Brown, MD, FAASLD, FAST, AGAF
Professor of Medicine
Wayne State University
Associate Medical Director
Henry Ford Hospital Transplant Institute
Henry Ford Hospital
Detroit, Michigan



Steven Flamm, MD, FAASLD, FACP

Director, Network Development for Liver Transplantation
Director of Clinical Research
Rush University Medical Center
Chicago, Illinois



Ira Jacobson, MD

Professor, Department of Medicine
Director, Hepatology
NYU Langone Health
New York, New York



VP, Community Outreach and New Collaborations

Marcelo Kugelman MD, FAASLD, FACP
Director of Hepatology and Research
South Denver Gastroenterology, PC
Englewood, Colorado



Treasurer & VP, Finance

Sammy Saab, MD, MPH, AGAF, FAASLD, FACP
Professor of Medicine and Surgery
Head, Outcomes Research in Hepatology
David Geffen School of Medicine at UCLA
Adjunct Professor of Nursing
UCLA School of Nursing
Associate Editor for Liver, Journal of Clinical Gastroenterology
Los Angeles, California

Embassy of Education

196
ADVISORS

EDUCATED OVER

15,000

49
STATES

HEALTHCARE PROFESSIONALS

The Embassy of Education is a dedicated working group led by hepatologists, committed to educating healthcare professionals about the latest advancements in managing chronic liver disease. The Embassy of Education network will actively disseminate the CLDF's Continuing Medical Education (CME) initiatives within their respective communities.

CLDF Committees

Alcohol Liver Disease Committee

Steven Flamm, MD (Chair)	Priya (Haripriya) Maddur, MD
Ashwani Singal, MD (Co-Chair)	Mack Mitchell, MD
Robert Brown, MD	Marina Serper, MD
Gene Im, MD	

Cirrhosis Committee

Sammy Saab, MD (Chair)	Marcelo Kugelmas, MD
Nikolaos Pyrsopolous, MD (Co-Chair)	Mitch Mahmoud, MD
David Bernstein, MD	Santiago Munoz, MD
Todd Frederick, MD	Vinod Rustgi, MD
Fred Gordon, MD	Robert Wong, MD

MASH Committee

Zobair Younossi, MD, MPH (Chair)	Nadege Gunn, MD, CPI
Alina Allen, MD (Co-Chair)	Scott Isaacs, MD
Manal Abdelmalek, MD	Marcelo Kugelmas, MD
Naim Alkhouri, MD	Sonal Kumar, MD, MPH
Saleh Alqahtani, MD	Rohit Loomba, MD, MHSc
Fernando Bril, MD	Janus Ong, MD, MPH
Laurent Castera, MD, PhD	Mary Rinella, MD
Kathleen Corey, MD, MPH	Jörn Schattenberg, MD
Luis Antonio Diaz, MD	Jeffrey Schwimmer, MD
Ajay Duseja, MBBS, MD, DM, MNAMS	Vincent Wong, MD
Scott Friedman, MD	Yusuf Yilmaz, MD
	Shira Zelber-Sagi, PhD

Cholestatic Liver Disease Committee

Kris Kowdley, MD (Chair)	Gideon Hirschfield, MD
Raj Vuppalanchi, MD (Co-Chair)	Sonal Kumar, MD, MPH
Chris Bowlus, MD	Dan Pratt, MD
Nadege T. Gunn, MD	Atoosa Rabiee, MD
	Marina Silviera, MD

CLD Health Outcomes Committee

Kimberly Brown, MD	Vishal Patel, MD
Jeffrey Dunn, PharmD, MBA	Nancy Reau, MD
Ziad Gellad, MD, MPH, AGAF	Ralph J. Riello III, PharmD, BCPS
Christopher V. Goff, JD, MA	Timothy Ritter, MD
Fasiha Kanwal, MD, MSHS	Sammy Saab, MD, MPH
Eduardo Kneler, MD	Elliot Tapper, MD
Marcelo Kugelmas, MD	Michael Thompson
Daniel Kus, B.S. Pharm. R.Ph.	Robert J. Wong, MD, MS
Myla Maloney, MBA, BCMAS	

CLDF Committees

Pediatric Committee

Carina Kugelmas, MD (Co-Chair)	Binita Kamath, MD
Miriam Vos, MD, MSPH (Co-Chair)	Rohit Kohli, MBS
Julie Bonn, MD	Mercedes Martinez, MD
Rima Fawaz, MD	Jeffrey Schwimmer, MD
Regino Gonzalez-Peralta, MD	Ronald Sokol, MD
Nitika Arora Gupta, MD	Stavra Xanthakos, MD, MS

HCC Committee

Laura Kulik, MD (Co-Chair)	Patricia Jones, MD
Robert J. Wong, MD (Co-Chair)	Neil Mehta, MD
Aijaz Ahmed, MD	Nicole Rich, MD
Richard Finn, MD	Mitchell Shiffman, MD
Pierre Gholam, MD	

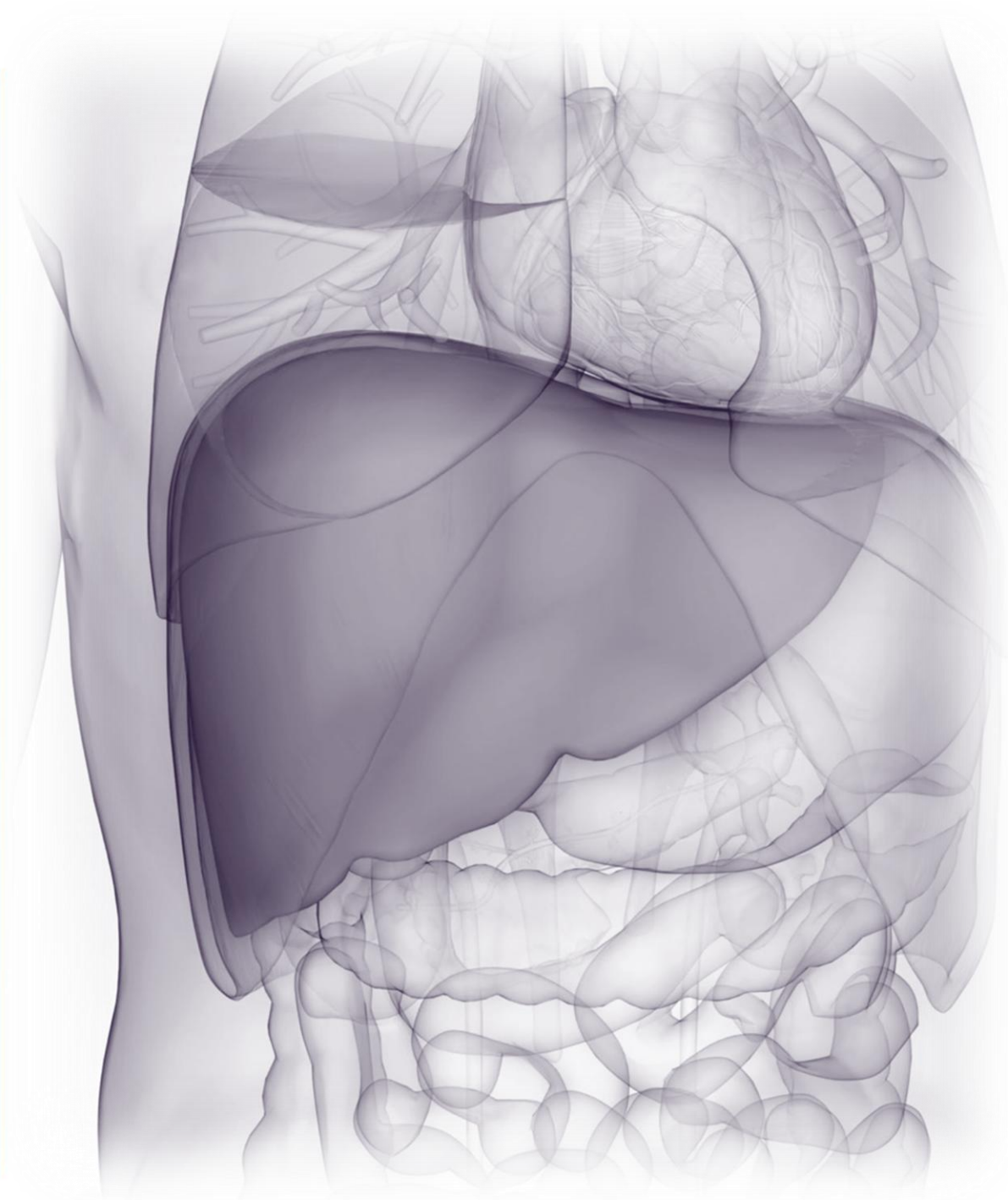
Viral Hepatitis Committee

Ira Jacobson, MD (Chair)	Tatyana Kushner, MD
Anthony Martinez, MD (Co-Chair)	Paul Kwo, MD
Joseph Ahn, MD	Joseph Lim, MD
David Bernstein, MD	Paul Martin, MD
Terry Box, MD	Milton Mutchnick, MD
Henry Chan, MD	George Papatheodoridis, MD
Douglas Dieterich, MD	Marina Roytman, MD
Geoffrey Dusheiko, MD	Andrew Talal, MD
Robert Gish, MD	Alex Thompson, MD
Prasun Jalal, MD	John Vierling, MD

CLDF WHISE: Women in Hepatology

Jihane Benhammou, MD	Jessica Leigh Mellinger, MD, MSc
Kimberly A. Brown, MD, FAASLD, FAST, AGAF	Nancy Reau, MD
Lily Dara, MD	Nicole Rich, MD
Nadege T. Gunn, MD, CPI	Jessica Strzepka, MD
Ani Kardashian, MD	Tram Tran, MD
Tatyana Kushner, MD, MSCE	Kali Zhou, MD
Michelle Lai, MD, MPH	

2025
Educational
Initiatives



Expert Perspectives On Primary Biliary Cholangitis (PBC)

Highlights from ACG & AASLD

Earn a maximum of 1.0 ACCME credit, 1.0 AAPA credit, or 1.0 ANCC contact hour!

LIVE BROADCAST

EXPERT PERSPECTIVES ON PRIMARY BILIARY CHOLANGITIS (PBC)

Join leading experts in a CME virtual broadcast as they share the latest insights and clinical perspectives on the diagnosis, management, and treatment of primary biliary cholangitis (PBC). Enhance your knowledge and improve patient outcomes with evidence-based strategies and expert guidance.



Steven Flamm, MD
RUSH University
Medical Center



Ira Jacobson, MD
NYU Langone Health



Andrea Gossard, APRN, CNP
Mayo Clinic

TUESDAY, FEBRUARY 25, 2025
7:00–8:00 PM ET



REGISTER
HERE



Jointly provided by the Medical Education Resources (MER), the Chronic Liver Disease Foundation (CLDF), and Gastroenterology & Hepatology Advanced Practice Providers (GHAPP).



Supported by an educational grant from Ipsen Pharmaceuticals.

Expert Perspectives on the Unmet Needs in Patients with Wilson Disease

Satellite Symposium hosted at the 2025 Liver Connect Conference

EXPERT PERSPECTIVES on the Unmet Needs in Patients with **Wilson Disease**

Thursday, March 20, 2025

6:00–7:00 PM

San Antonio Ballroom D-I



Speaker:
Sammy Saab, MD, MPH



Speaker:
Regino Gonzalez-Peralta, MD

Objectives:

- Understand the pathophysiology of Wilson Disease
- Identify challenges in the diagnosis and management of Wilson Disease
- Evaluate effective strategies to promote patient adherence and compliance and build patient rapport

Bridging the Gap: Strategies to Advance Equity in Liver Disease Care

*Session hosted at the 2025
Liver Connect Conference*

Earn 1.0 AMA PRA Category 1 Credit™!

Bridging the Gap: Strategies to Advance Equity in Liver Disease Care

Friday, March 21, 2025

5:00–6:00 PM

San Antonio D-1



**Kimberly A. Brown, MD,
FAASLD, FAST, AGAF**
Henry Ford Hospital
Detroit, MI



Lily Dara, MD
Keck School of Medicine
University of Southern California
Los Angeles, CA



Nadege T. Gunn, MD, CPI
Impact Research Institute
Waco, TX



Tatyana Kushner, MD, MSCE
Weill Cornell Medicine
New York, NY



Nancy Reau, MD
Rush University Medical Center
Chicago, IL

Jointly provided by Medical Education Resources and the Chronic Liver Disease Foundation.



Supported by an educational grant from Gilead Sciences, Inc.

Expert Perspectives On Chronic Liver Disease From ACG & AASLD

LIVE BROADCAST

Earn up to a maximum of
1.0 AMA PRA Category 1 Credit™

EXPERT PERSPECTIVES ON CHRONIC LIVER DISEASE FROM ACG & AASLD

**THURSDAY, DECEMBER 4, 2025
7:00 PM EST**

FACULTY



Gideon Hirschfield, FRCPP, PhD
Toronto General Hospital
Toronto, CA



Robert Wong, MD, MS, FACG, FAASLD
Stanford Palo Alto VA
Palo Alto, CA, USA



Elizabeth Goacher, PA-C, AF-AASLD
Duke Health
Durham, NC



**Scan QR Code
to Register!**

Jointly provided by the University of Cincinnati, the Chronic Liver Disease Foundation, and Gastroenterology and Hepatology Advanced Practice Providers.



Supported by educational grants from Gilead Sciences, Inc., Ipsen Biopharmaceuticals, Inc., and Salix Pharmaceuticals.

LIVER CONNECT

CLDF

Chronic Liver Disease Foundation

Conference Overview

Thursday, March 20 – Saturday, March 22, 2025

La Cantera | San Antonio, Texas

www.liverconnect.org

Course Directors

Dr. Aijaz Ahmed, Dr. Kimberly Brown, Dr. Steven Flamm, Dr. Ira Jacobson, Dr. Marcelo Kugelmas, Dr. Sammy Saab, and Dr. Zobair Younossi

Pediatric Course Directors

Dr. Carina Kugelmas and Dr. Miriam Vos

PARTICIPANTS



500+

Participants in Liver Connect 2024 conference

OBJECTIVES



97%

of attendees who completed an evaluation determined that the learning objectives were met

SPEAKER EFFECTIVENESS



97%

of attendees who completed an evaluation rated the speakers 'Excellent' or 'Very Good'

SCOPE AND BIAS



100%

of attendees who completed an evaluation form started the education was free of commercial bias and matched their current scope of practice

INTENT TO CHANGE



99%

of attendees who completed an evaluation form agreed that the education presented would cause them to make a change in their practice

LOGISTICS



98%

of attendees who completed an evaluation form agreed that the activity improved their ability to perform as a more efficient healthcare team member

5th ANNUAL CONFERENCE

LIVER CONNECT



MASH APP Preceptorship Series

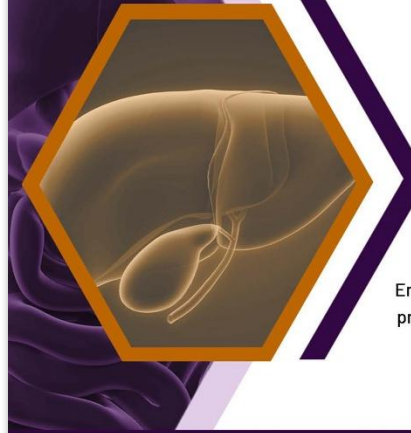
Jointly provided by the Annenberg Center for Health Sciences at Eisenhower, Chronic Liver Disease Foundation (CLDF), and Gastroenterology & Hepatology Advanced Practice Providers (GHAPP).



Imparting knowledge. Improving patient care.



Supported by an educational grant from Madrigal Pharmaceuticals and Novo Nordisk Inc.



MASH APP PRECEPTORSHIP

A Two-Part Training in MASH Diagnosis and Care

Enhance your expertise in MASH diagnosis and management with this one-of-a-kind preceptorship. Join us for a two-part training experience that will elevate your skills and connect you with a network of liver-focused professionals. Apply today to take the next step in your career!



Scan the QR code or visit the link below to apply or learn more!

Why Apply?

- Gain valuable foundational and in-clinic experience
- Learn from fellow APPs and physician faculty
- Earn up to 16.5 CME or contact hours
- Boost your clinical skills in MASH diagnosis and management
- Expand your professional network with liver-focused APPs

www.ghapp.org/mash-preceptorship

APPLY TODAY!

Program Overview

This preceptorship, in collaboration with the Chronic Liver Disease Foundation (CLDF) and Gastroenterology & Hepatology Advanced Practice Providers (GHAPP), aims to develop the expertise of advanced practice providers in managing metabolic dysfunction-associated steatohepatitis (MASH). This two-part program includes a ½ day foundational training and a two-day in-clinic workshop, offering practical experience for gastroenterology and hepatology practitioners.

Participating Sites

- Atlanta Gastroenterology Associates, a Division of United Digestive – **Part I: Saturday, November 1**
- Arizona Liver Health – **Part I: Saturday, November 1**
- Indiana University Health – **Part I: Saturday, November 15**
- Gastro Health – **Part I: Saturday, December 6**
- South Denver Gastroenterology – **Part I: Saturday, December 13**
- Erie County Medical Center – **Part I: January 14 & February 11, 2026**
- Duke University Medical Center – **Part I: Saturday, January 24**
- *More to come!*

Participation is limited to 10 APPs per location.

Don't miss out on this unique opportunity to transform your practice and expand your clinical expertise.

MASH APP

Preceptorship Series

Participating Centers

Atlanta Gastroenterology Associates

Arizona Liver Health

Indiana University Health

Gastro Health

South Denver Gastroenterology

Coryell Health

Erie County Medical Center

Cleveland Clinic Foundation

Duke University Medical Center

RUSH University Medical Center

Integrated Learning Model:

- Combines didactic training with hands-on in-clinic preceptorships, bridging the gap between theoretical understanding and real-world application in MASH Management.

Phase I: Foundational Didactic Session

- Establishes a uniform baseline of knowledge through expert-led lectures, focusing on the latest MASH data and clinical guidelines

101

Phase I Participants*

Phase II: Clinical Preceptorship

- Translates theory into practice via direct patient shadowing, enhancing clinical reasoning and confidence through real-world complexity

30

Phase II Participants*

Breakthroughs in **MASH** DIAGNOSIS AND MANAGEMENT

Liver Connect City Series

Powered by:



25

Meetings

*October 2025 –
March 2026*

778

**Healthcare
Providers
Educated**

**Led by
Expert Educators**

43

Physician Faculty

24

APP Faculty

Supported by an educational grant from
Madrigal Pharmaceuticals.

Enduring Webcasts



ACCREDITED WEBCAST ARE NOW AVAILABLE

EXPERT PERSPECTIVES ***POST CONFERENCE HIGHLIGHTS ON*** ***MASLD/MASH***

View All Four Post-Conference Webcast Highlights on MASLD/MASH
Earn up to **4.0 CME Credits** and stay updated on the latest advancements presented at leading hepatology and gastroenterology conferences.



Accredited Webcasts Available Updates on MASLD/MASH:
<https://www.ghapp.org/expert-perspective-webcasts/post-conference>

Supported by an educational grant from Novo Nordisk Inc.

15th Annual CLDF Reception at EASL

183
Attendees

DATE

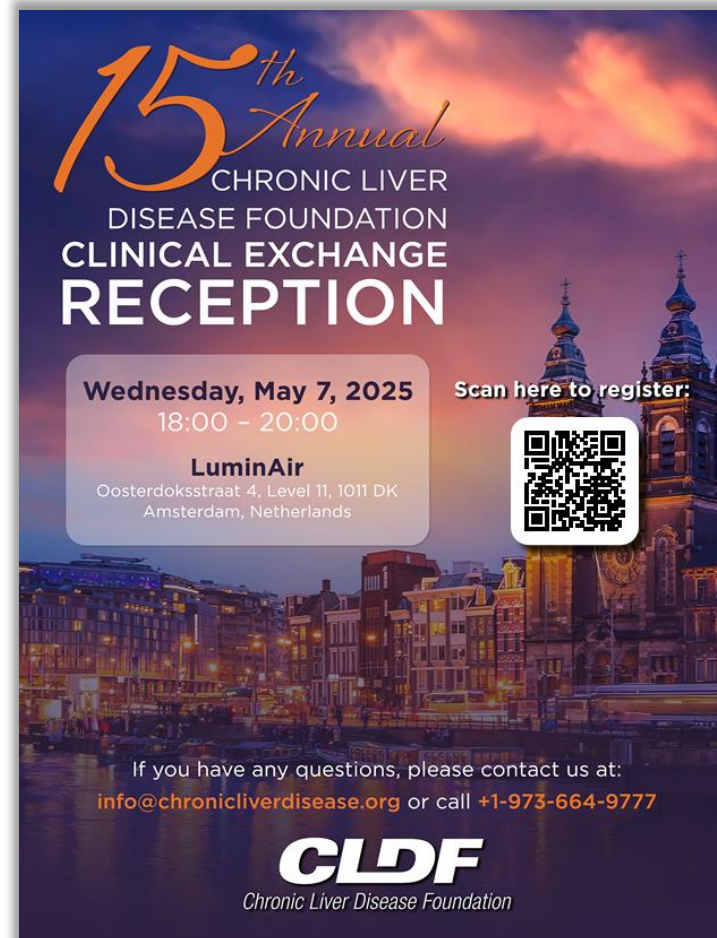
Wednesday, May 7, 2025

VENUE

LuminAir

Oosterdoksstraat 4, 1011 DK
Amsterdam, Netherlands

PDF Invitation




15th Annual
CHRONIC LIVER
DISEASE FOUNDATION
CLINICAL EXCHANGE
RECEPTION

Wednesday, May 7, 2025
18:00 - 20:00

Scan here to register:

LuminAir
Oosterdoksstraat 4, Level 11, 1011 DK
Amsterdam, Netherlands



If you have any questions, please contact us at:
info@chronicliverdisease.org or call +1-973-664-9777

CLDF
Chronic Liver Disease Foundation

Signage



CLDF
Chronic Liver Disease Foundation

Thank You To Our Sponsors!

 **IPSEN**

 **Madrigal**

 **GILEAD**

 **Intercept**
ALFASIMAGROUP

 **BOSTON**
Pharmaceuticals

 **FUJIFILM**
Value from Innovation

 **inventiva**

 **Salix**
PHARMACEUTICALS

Join the Chronic Liver Disease Foundation for the

15th Annual

Clinical Exchange Reception

Thursday, November 6, 2025

6:00 PM to 8:00 PM

Limani Restaurant Washington DC

670 Wharf St SW • Washington, DC 20024

196

Participants

Thank you to our sponsors.



GILEAD

GSK



IPSEN



Madrigal

Orphalan

Innovation
for Orphan
Diseases

Salix
PHARMACEUTICALS

CLDF

Chronic Liver Disease Foundation



AASLD Abstracts 2025 – Advisors Review

MASLD / MASH

Type	Abstract No.	Title	Grade (A, B, C)
Oral	0112	EFFECT OF RESMETIROM OR PLACEBO IN NASH FIBROSIS PATIENTS WITH < 5% OR > = 5%WEIGHT LOSS AND/OR ON BASELINE GLP-1 THERAPY IN THE MAESTRO-NASH 52 WEEK SERIAL LIVER BIOPSY STUDY	
Oral	0004	2070 RESMETIROM EFFECTS ON NASH WITH LIVER FIBROSIS IN PATIENTS WITH NASH GENETIC RISK ALLELES	
Oral	0147	520 METABOLIC DYSFUNCTION ASSOCIATED STEATOTIC LIVER DISEASE (MASLD) IS SIGNIFICANTLY ASSOCIATED WITH BIOLOGICAL AGE AND ITS ACCELERATION AS ASSESSED BY METHYLATION CLOCK	
Oral	0203	USE OF GLUCAGON-LIKE PEPTIDE 1 RECEPTOR AGONISTS (GLP-1 RA) IN PATIENTS WITH MASLD IN A REAL-WORLD SETTING IS ASSOCIATED WITH SLOWER DISEASE PROGRESSION AND LOWER ALL CAUSE MORTALITY	

CLDF
Chronic Liver Disease Foundation

59

**Live Independent
Reviewers**



Publications

PUBLISHED SEPTEMBER 2025

American Journal of Medicine

**A PRACTICAL APPROACH TO THE
DIAGNOSIS AND MANAGEMENT OF
HEPATIC ENCEPHALOPATHY**

VIEW NOW

EXPERT PERSPECTIVES

Published April 2025 • Hepatology Communications

SCREENING AND MANAGEMENT OF PORTAL HYPERTENSION AND VARICES IN CIRRHOSIS

VIEW NOW

CLDF Expert Perspectives White Paper

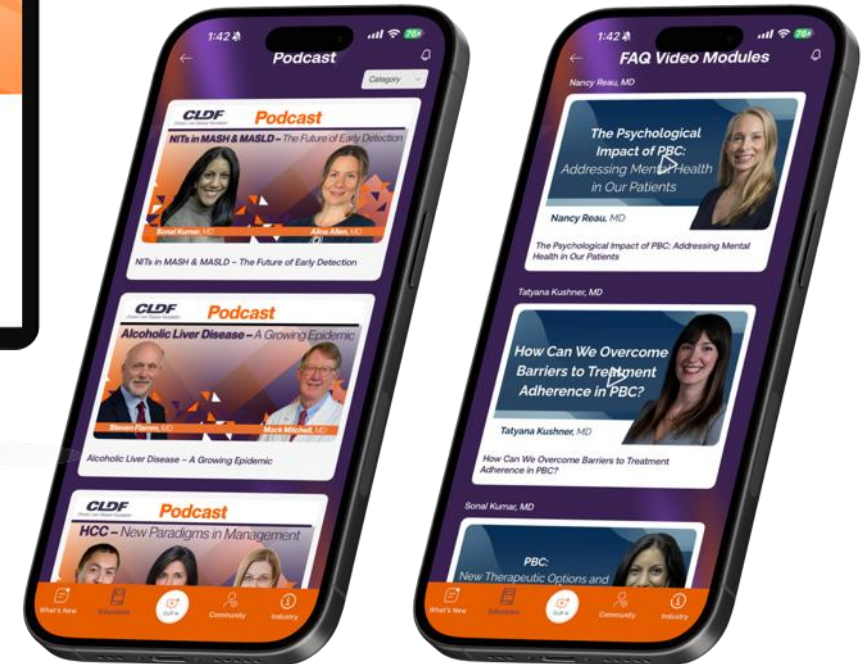
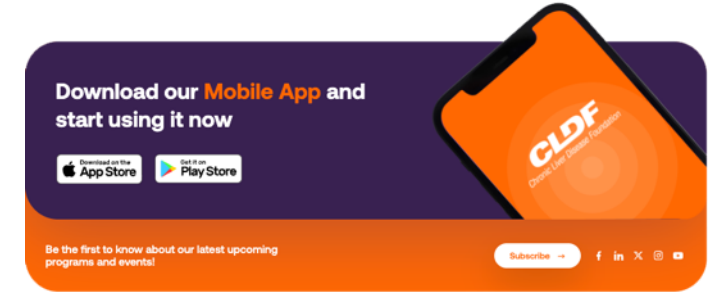
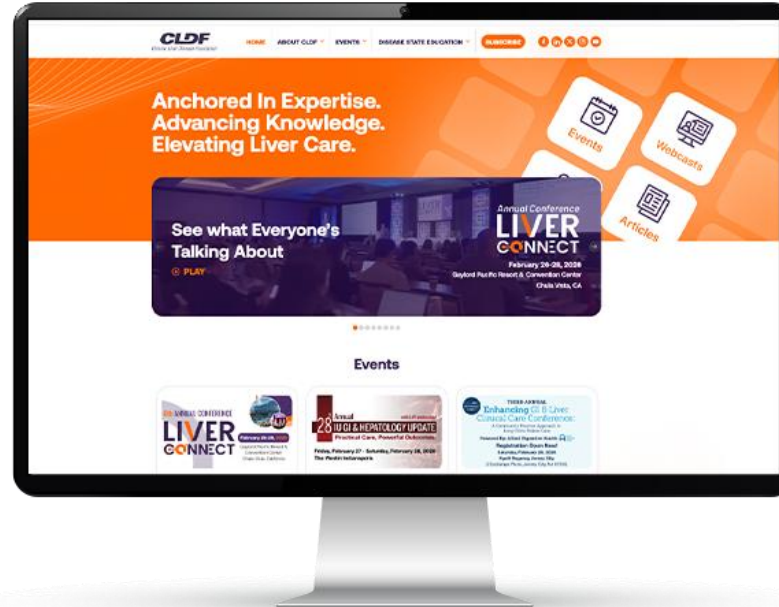
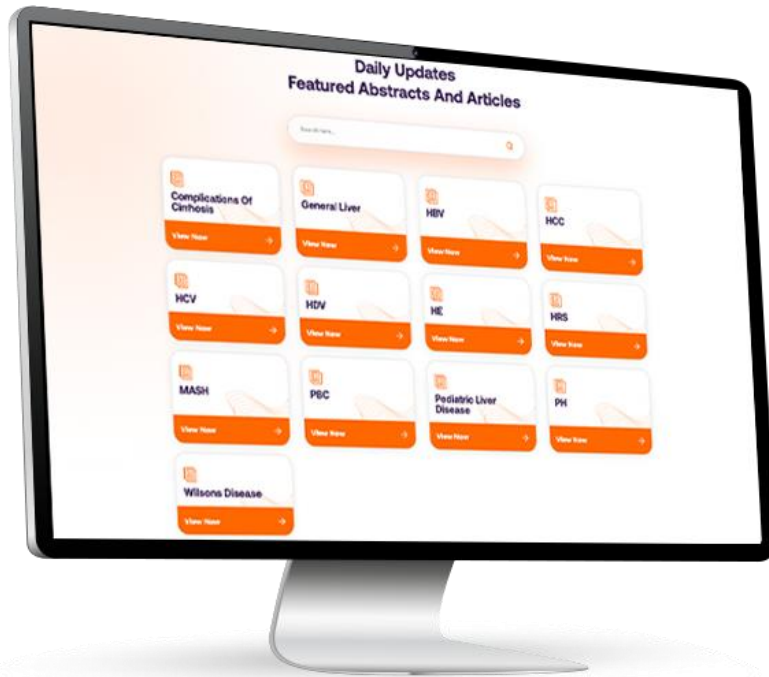
**Clinicians and Patients Confront
Practical Issues in Wilson Disease**

March 2025

VIEW NOW

CLDF Education Portal

Online Tools – Featured Resources





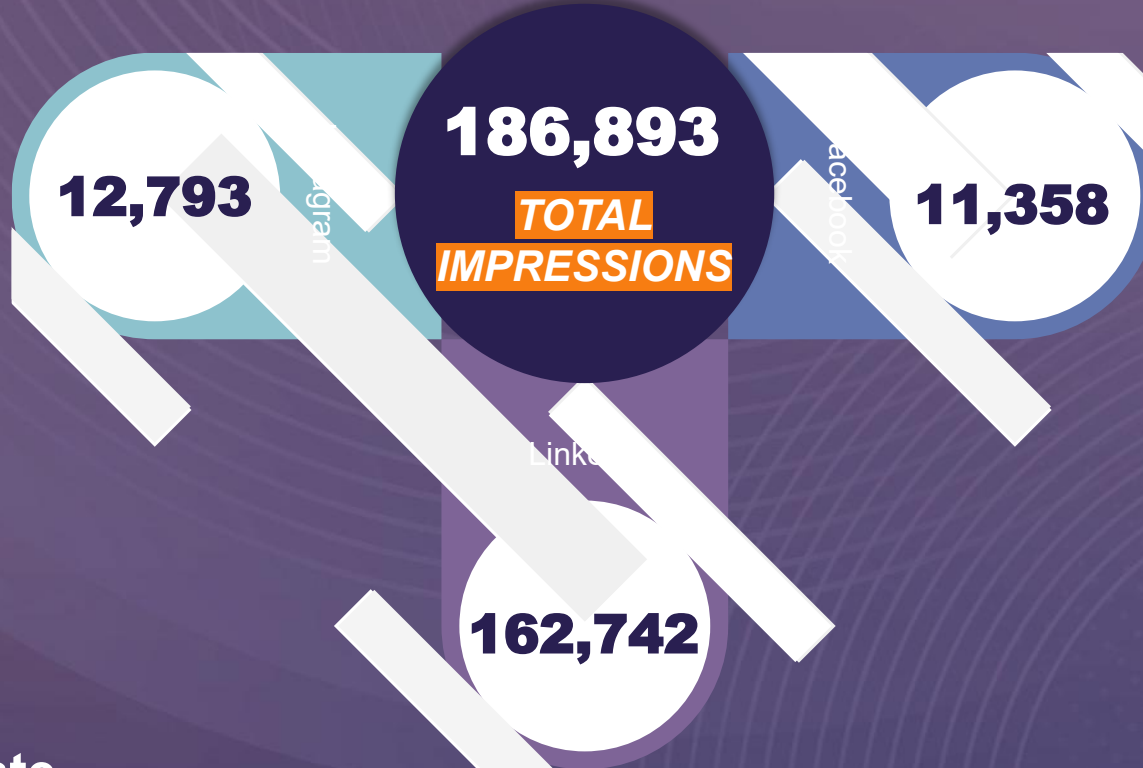
917 Followers

Social Media Engagement

658 Posts Published



958 Followers



613 Followers

8.1% Engagement Rate



2800 Followers
2770 Page Likes

CLDF Conference Endorsements

**ADVANCES IN
GASTROENTEROLOGY &
HEPATOLOGY CONFERENCE**

UC San Diego
SCHOOL OF MEDICINE

UHealth UNIVERSITY OF MIAMI
MILLER SCHOOL
OF MEDICINE
MIAMI
Gastroenterology Congress

RUSH INTO GI:
AN UPDATE IN GASTROENTEROLOGY AND HEPATOLOGY

**Allied
Digestive
Health**
ALLIED DIGESTIVE HEALTH CONFERENCE
**Enhancing GI & Liver
Clinical Care:**
A Community Practice Approach to
Long-Term Patient Care

Annual *with LIVE endoscopy!*
IU GI & HEPATOLOGY UPDATE

United
GI & LIVER
Conference

**GI &
Liver**
Symposium
Current Guidelines and
Management Strategies
Updates for the Practitioner

**LIVER
CONNECT**

GLIDE Conference
Greater Long Island Digestive Education
EMPOWERING CLINICIANS AND APPS WITH THE LATEST ADVANCES IN GI & LIVER CARE

TEXAS
GI AND HEPATOLOGY
ROUND UP

**NEW
INNOVATIONS**
in Gastroenterology and Liver Diseases

**Pacific Northwest
GI and Liver Update**
Powered by: Liver Institute Northwest

Annual UCLA
**Liver Diseases
Symposium**

UPDATES IN GI
A CME Conference Powered by **GASTRO
HEALTH**

**NEW
ENGLAND**
GI & LIVER UPDATE

**RUSH LIVER
CONFERENCE**
HIGHLIGHTING CLINICAL DATA FROM THE LIVER
CONGRESSES FOR THE PRACTICING CLINICIAN



Mid-Atlantic
GI & Liver Conference

Thank You to Our Sponsors

89bio

Bausch Health

Boehringer Ingelheim

Boston Scientific

Eagle US

Echosens

Eton Pharmaceuticals

Fibronostics

Fujifilm

Genentech

Gilead

GSK-Glaxo-Smith-Kline

HEPQuant

Intercept Pharmaceuticals

Inventiva

Ipsen

Liver Education Advocates

Madrigal Pharmaceuticals

Mallinckrodt Pharmaceuticals

Mirum

Novo Nordisk

Orphalan

Salix Pharmaceuticals

Sequana Medical

Siemens

Thank You to Our Grant Supporters

Chiesi USA, Inc.

Gilead

GSK-Glaxo-Smith-Kline

Ipsen

Madrigal Pharmaceuticals

Novo Nordisk

Orphalan

Salix Pharmaceuticals